

## JOB

2016 Version

---

### TECHNICAL SHEET

---

#### :: SCENARIO / MACHINERY

Assembly time

- Installation 4 hours
- Focus and equalization 2 hours

Minimum stage dimensions

- 12 x 9m. (40 x 30 feet)

Black masking

- 4 sets of legs
- 4 back drops

Bars (situated as mapped)

- 3 electric bars on stage
- 1 frontal light

Others

- Central access stairs (public - stage) 3 tables 2 x 1 m (6,5x 3,3 feet)

#### :: LIGHTS

Front room

- 11 x 1kW profile spotlights 25 / 50o Robert Juliat, ADB or similar (\*)
- 2 x 2 Kw profile spotlights Robert Juliat, ADB or similar (\*)
- 4 Cyc lights(\*)

Stage

- 18 x 1kW PC projectors with barndoors . Robert Juliat, ADB or similar (\*)
- 2 x 1kW profile spotlights. 13 / 42o Robert Juliat, ADB or similar (\*)
- 7 PAR-64 1kW no5 (lamp CP-62) (\*)
- 16 Cyc lights

(\*) All these projectors must wear filter holder, claw and safety cable.  
Dimmers / Control

- 48 control channels 2 Kw. DMX-512 protocol.
- Computerized table with at least 48 channels with automatic crossfaders and manual submasters with DMX-512 protocol.
- Cabling needed for the entire set up of the lighting.

#### :: SOUND

- PA and sufficient amplification for the dimensions of the hall.  
(Minimum 2000 Wts.)
- MONITORING and amplification on stage. A box on each side  
(Minimum 1000 Wts.)
- Control snake to connect the sound table of the company.  
4 sends: P.A. L / R and 2 monitors.
- Sufficient cabling and accessories

#### :: CONTROL POSITION

It must be located in a place from where you can see, hear and work comfortably.

# Clownic

GESTURAL COMIC THEATER

(+34) 626 729 337 | info@clownic.es | www.clownic.es

## :: PERSONNEL

Unload personnel

2 people loading and unloading

Assembly, disassembly and loading

2 people loading and unloading 1 electrician 1 machinist 1 sound engineer

## :: THE SHOW

2 loading / unloading to serve the show 1 electrician on guard by dimmers and sound stages.

## :: VARIOUS

Stage must be cleaned thoroughly before each performance.

Enough mineral water for installation and performance. Ironing if the theater has this service, otherwise must contact nearest laundromat.

1 dressing room for actors. 1 dressing room for technical team.

Equipped with:

- Tables
- Chairs
- Enough light
- Hot showers
- Towels
- Toilet

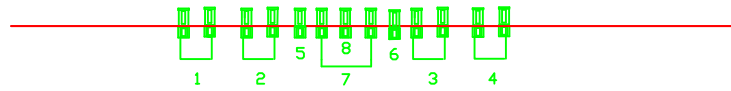
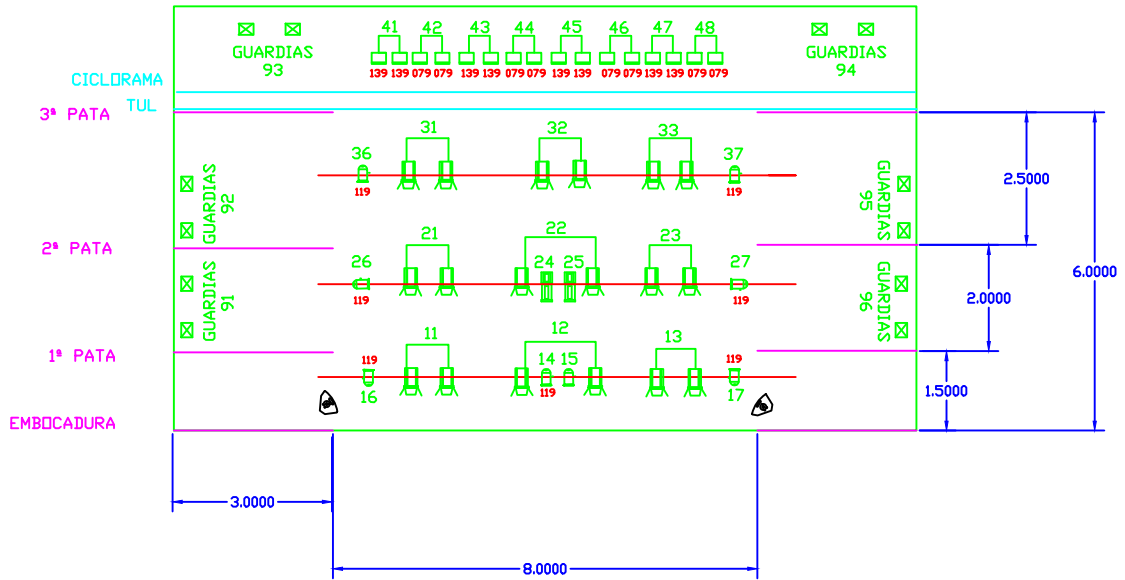
**Still water in abundance during assembly / disassembly and show.**

**:: IMPORTANT:** Before the arrival of the company to the theater, the lightbars have to be set with the spotlights hanging as mapped and at working height and the L and R sound connections ready. The black box must be set according to the map with cyclorama and tulle.

It is imperative, **TOTAL BLACKOUT TO ACHIEVE THIS SHOW**



C. Companys, 5 1-1  
43470 · La Selva del Camp  
CIF: B55623854



# leyenda

- Asimetricos
- ▢ Par (lamp. 5)
- xxx color filtro (LEE)
- ⏏ PC 1kW
- xx numero canal
- ⏏ Recortes (25°~50°)
- 👁 Monitor

12/05/2014	JOBS		
	LUCES/CAMARA NEGRA	Plano 01-10	