

# Clownic

GESTURAL COMIC THEATER

(+34) 626 729 337 | info@clownic.es | www.clownic.es

## TICKET 2016 Version

---

### TECHNICAL REQUIREMENTS

---

#### :: SCENOGRAPHY / PROPS

##### Set-up time

- Setting-up: 5 hours
- Lights aiming, Sound system optimisation and rehearsals 2 to 3 hours

##### Stage measures

- Minimum of 12 x 9m

##### Black chamber

- 3 side drop sets
- 3 ceiling rod drops

##### Ceiling Rods (as shown on plot)

- 3 electric rods above stage
- 1 stall rod
- House lights (desk controlled)

##### Miscellaneous

- 1 central stairway (stage to stall)
- 3 (2 x 1m) desks on stage

#### :: LIGHTS

##### Stall / House

- 13 (1 Kw) Robert Juliat, ADB or similar profile spots with 15°/30° variable angle lens
  - 4 asymmetric quartz light spots, for house lighting (\*).
- (\* ) substitutable by halogen lights or similar only if desk controlled

##### Stage

- 20 (1 Kw) Robert Juliat, ADB or similar PC spots with blades mounted
  - 5 (1 Kw) Robert Juliat, ADB or similar profile spots with 15°/40° variable angle lens
  - 9 asymmetric quartz light spots for ciclorama lighting
  - Blue safety lights in sides and back
  - 1 side stand for holding a spot at 1.2m height
- All spots must have safety wires and filter holders mounted

##### Dimmers/control

- 36 (2 Kw) channels on DMX-512.
- Lights control through company's own computer. Desk required as backup
- DMX signal on stage.
- Electric cords for all spots
- Gangway or similar for conducting video wires from control desk to stage

#### :: SOUND

##### Stage

- P.A. system: adequate to house (4000W minimum).
- Monitors: one speaker on each side of stage (400W per side minimum).
- Stage to control room snake with a minimum of 1 input channel and 4 returns (Left, Right plus 2 monitors).
- All required cabling and accessories

# Clownic

GESTURAL COMIC THEATER

(+34) 626 729 337 | info@clownic.es | www.clownic.es

## Control Room

- Sound desk with 12 input channels and 2 auxiliary sends
- 1 (2x1m) Rosco (or similar) stable desk for control equipment placed in a properly conditioned (good hearing and watch line) spot
- All cabling ends (DMX and sound) must be placed close enough at the control room (same operator for lights and sound)

## :: PERSONNEL

### Set-up

- 2 people for unloading the set
- 1 props man
- 1 lights technician
- 1 sound technician

### Performance

- 2 stage assistants
- 1 backup lights/sound technician

## :: MISCELLANEOUS

- Stage cleaning before each show
- Clothes ironing service
- 2 ample dressing rooms (1 for actors and 1 technical staff) equipped with proper lighting, tables and chairs, toilets, hot water showers and towels.

## IMPORTANT:

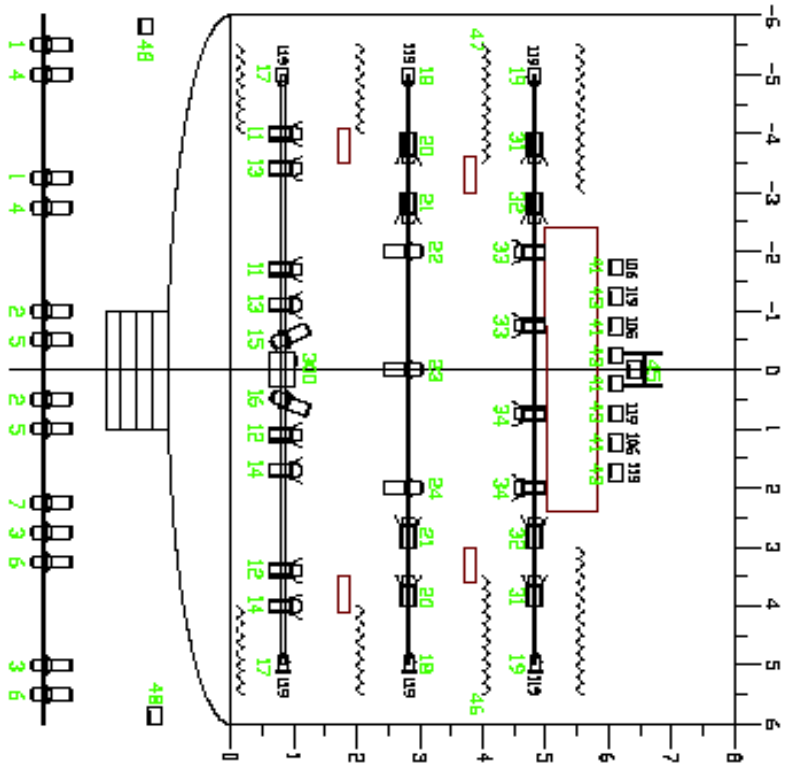
- Abundant still water (not sparkling) available during set-up, performance and packing
- Black chamber must be set up properly (as shown on plot) before company's arrival
- All light spots must be set up as shown on plot and rods must be placed at working height

**TOTAL BLACKOUT IS ABSOLUTELY REQUIRED  
FOR PROPERLY PERFORMING THE SHOW**



C. Companys, 5 1-1  
43470 · La Selva del Camp  
CIF:B55623854

- 1KW PC
- 1KW Profile
- 64-lamp P AR can
- 1KW Assymetric Quartz Ligh



Company: **Clownic**    Event: **Ticket**

Director: **Marc Montserrat.**

Technic: **Joan Delshorts.**

Date: **3 d'octubre de 2011**